



Tutorial TecnoMETAL

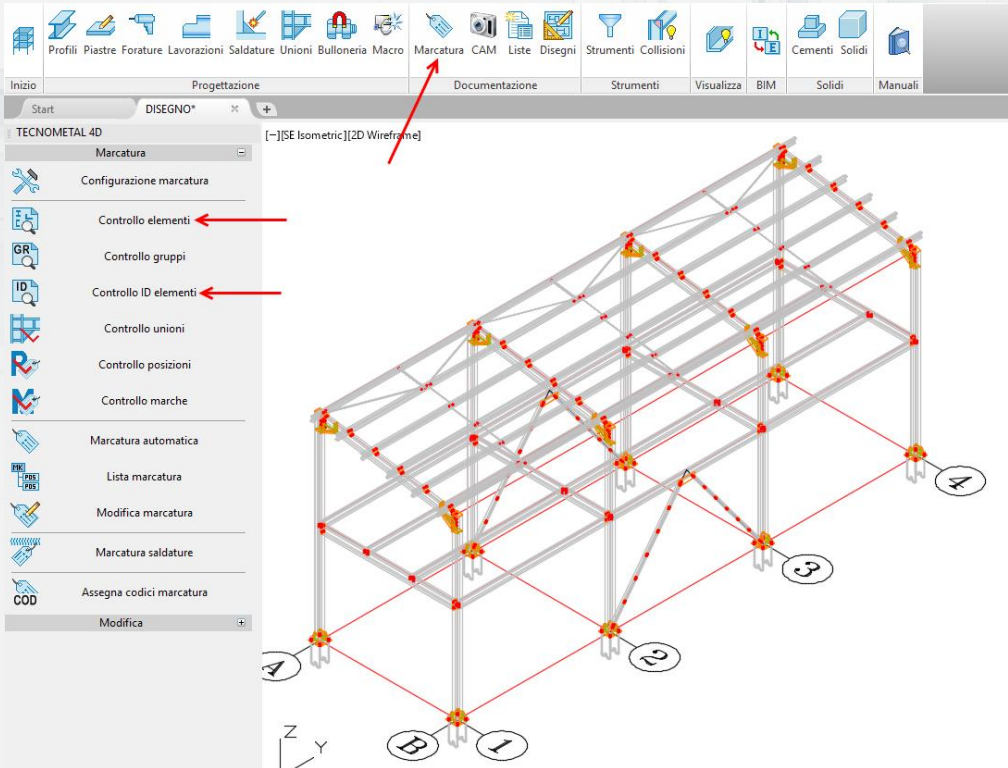


Lesson 2 Structure marking, Materials lists and Workshop sketches with **TecnoMETAL**



STRUCTURE MARKING

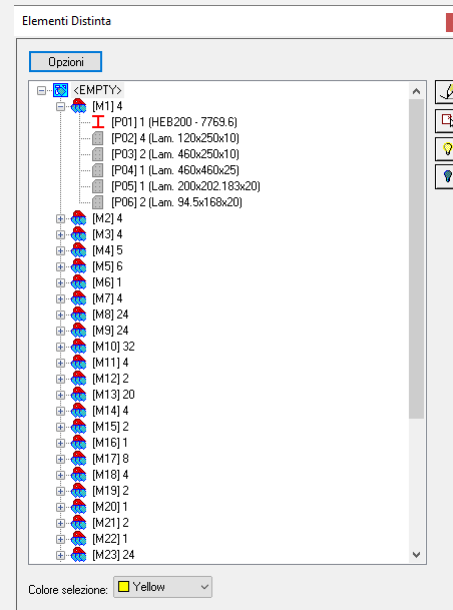
The marking is the necessary step to extract the information from the model, to obtain the materials lists, the workshop sketches and subsequently the 2D works of the pieces. Before marking run the check commands: Elements check and Elements ID check, if errors are found, repeat the command and run Correct errors.



Selecting the command **“Automatic Marking”** 5 options are proposed in CAD command line: in this example, choose the option "All (A)" and press <Enter>.

At the end of the marking, use the command **"Marking List"** to visualize the result. Click with the mouse on the symbol (+) to visualize the marking list.

Click on the symbol (+) of any mark to visualize the positions that compose the mark.

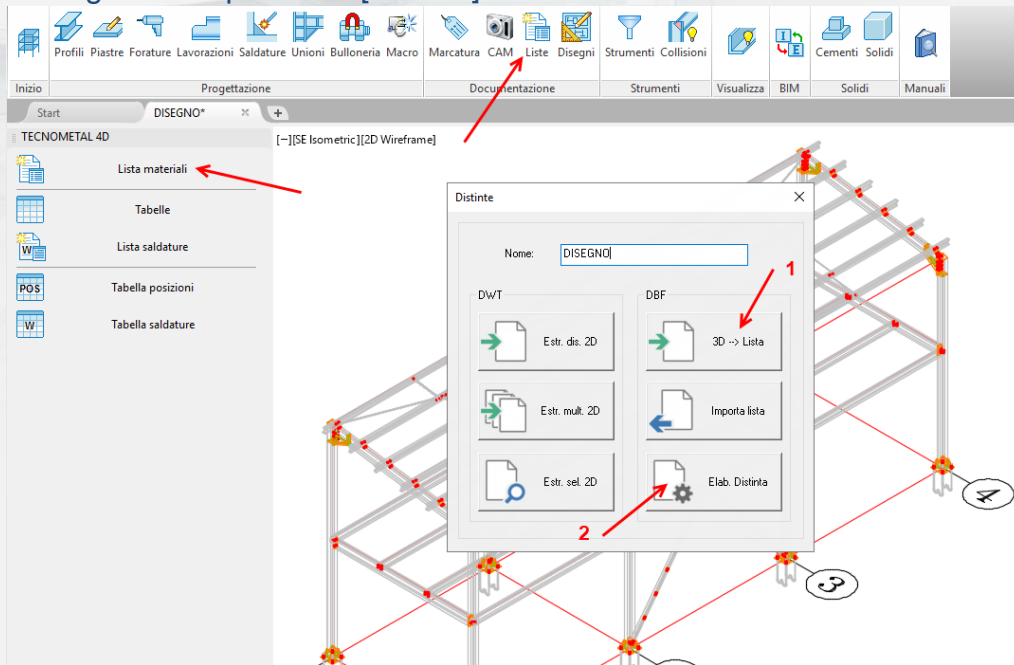




BILL OF MATERIALS

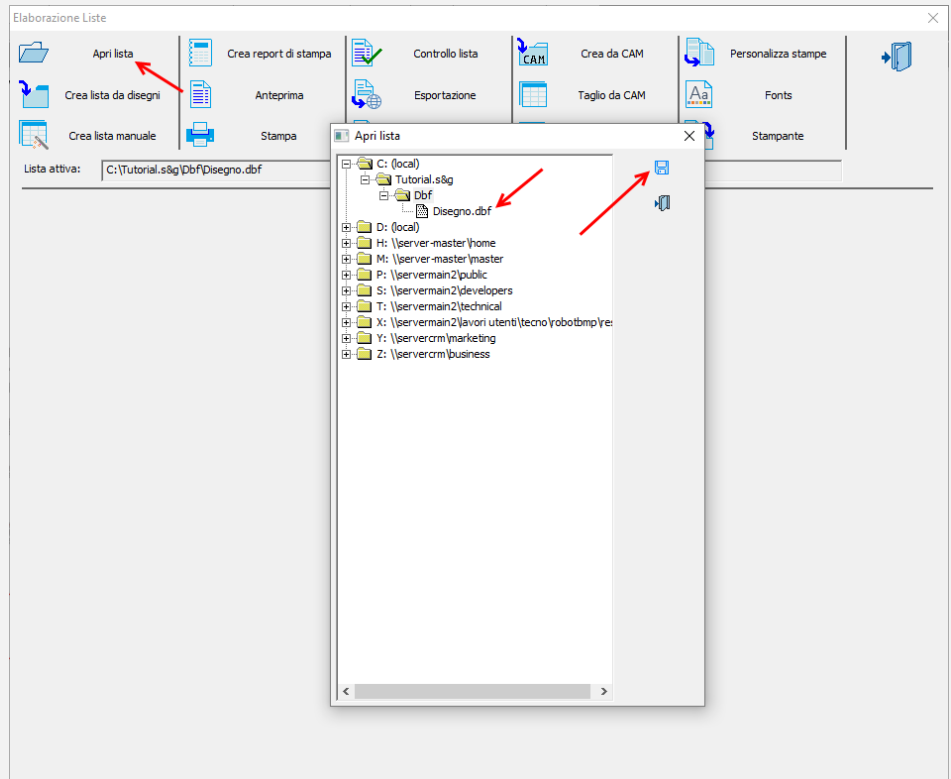
Press the button “Bill of material”, select the option “3D - List” (1). The procedure requires:

- Marks to extract [All/Selection/None]: select "A"
- Extract nuts and bolts [No/Yes]: select "Y"
- Calculate the net weight in the positions [No/Yes]: select "Y"



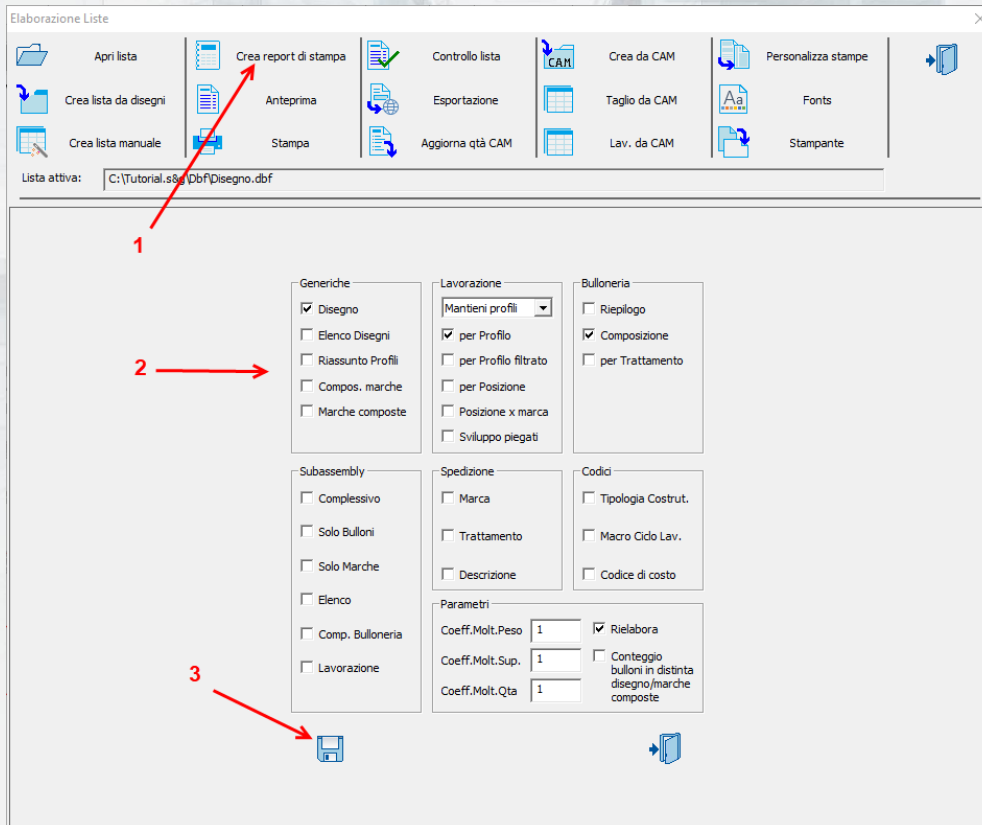
Select again the command “Lists” and select “List elaboration” (2). Press OK.

List elaboration screen is displayed, click on **Open list** and inside the DBF folder select the file with the name drawing.dbf and save.

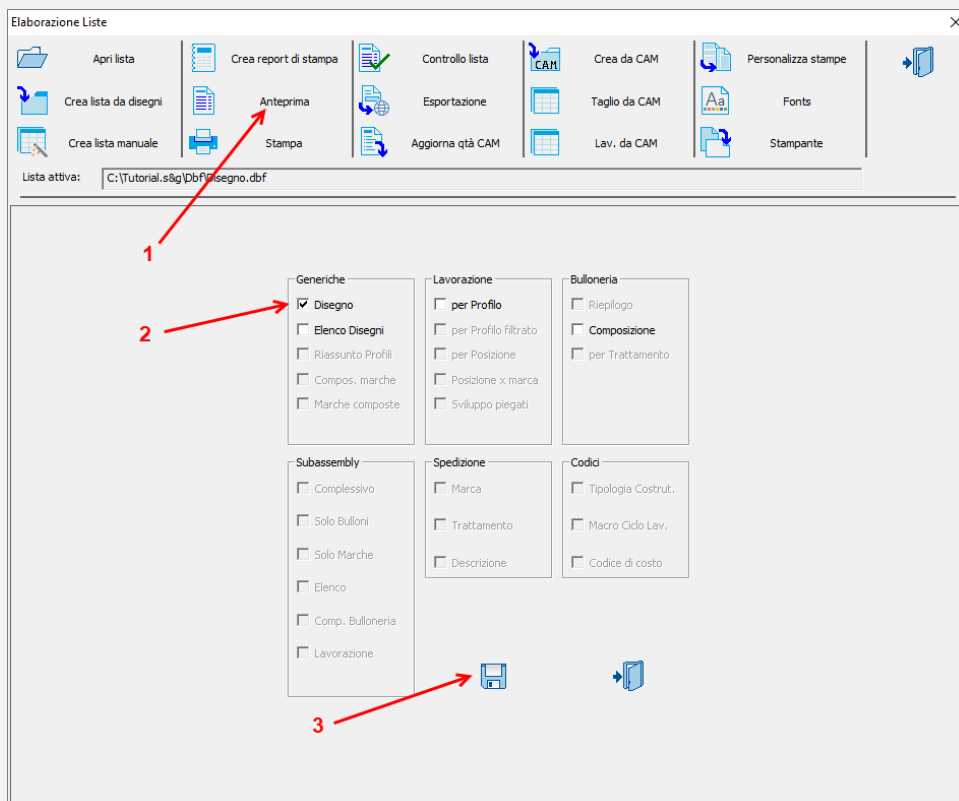




Select **Create Print Report (1)**, select the lists to be created (2) and press **Save (3)**



Select **Preview (1)**, select the lists to be displayed (2) and then press **Save (3)**.





The list is displayed, to scroll it use + and - buttons

PrintList - Disegno.dbf

Stampa Chiudi



Steel & Graphics Verona Italy
Commissa: TUTORIAL
Disegno



S.A.	Marca	Pos.	Descrizione	Qta	Lar.	Sp.	Lung.	Mat.	P.Un.	P.Tot.	S.Tot.
										10893	289.8
M1			HEB200	4					547.1	2188	40.6
	P01		HEB200	1			7770	S235-JR	474.8	475	8.9
	P02	Lam. 10		4	250	10	120	AIS304	1.4	6	0.2
	P03	Lam. 10		2	250	10	460	AIS304	7.1	14	0.4
	P04	Lam. 25		1	460	25	460	AIS304	41.2	41	0.5
	P05	Lam. 20		1	202	20	200	AIS304	6.4	6	0.1
	P06	Lam. 20		2	168	20	95	AIS304	2.4	5	0.1
M2			HEB200	4					498.0	1992	36.9
	P02	Lam. 10		4	250	10	120	AIS304	1.4	6	0.2
	P03	Lam. 10		2	250	10	460	AIS304	7.1	14	0.4
	P04	Lam. 25		1	460	25	460	AIS304	41.2	41	0.5
	P05	Lam. 20		1	202	20	200	AIS304	6.4	6	0.1
	P06	Lam. 20		2	168	20	95	AIS304	2.4	5	0.1
	P07		HEB200	1			6970	S235-JR	425.8	426	8.0
M3			IPE270	4					202.0	808	22.3
	P08		IPE270	1			5150	S235-JR	185.8	186	5.4
	P09	Lam. 25		2	310	25	135	AIS304	8.1	16	0.2
M4			IPE220	5					156.5	783	25.3
	M4		IPE220	1			5971	S235-JR	156.5	157	5.1
M5			IPE220	6					155.4	933	30.4
	M5		IPE220	1			5973	S235-JR	155.4	155	5.1
M6			IPE220	1					164.5	164	5.3
	P010		IPE220	1			5971	S235-JR	156.5	157	5.1
	P011	Lam. 8		1	196	8	668	AIS304	8.0	8	0.3
M7			IPE300	4					333.9	1336	30.3
	P012		IPE300	1			5230	S235-JR	218.9	219	6.1
	P013	Lam. 20		4	277	20	70	AIS304	3.0	12	0.2
	P014	Lam. 20		1	150	20	590	AIS304	14.0	14	0.2
	P015	Lam. 10		1	322	10	452	AIS304	5.2	5	0.1
	P016	Lam. 35		2	630	35	200	AIS304	33.2	66	0.6
	P017	Lam. 20		1	150	20	515	AIS304	12.3	12	0.2
	P018	Lam. 10		1	258	10	450	AIS304	5.2	5	0.1
M8			L80*8	24					1.3	31	1.1
	M8		L80*8	1			140	AIS304	1.3	1	0.0
M9			L100*10	24					2.1	49	1.3
	M9		L100*10	1			140	AIS304	2.1	2	0.1
M10			TONDO 24	32					3.5	126	2.7
	M10		TONDO 24	1			1104	AIS304	3.5	4	0.1
M11			L70*6	4					29.0	116	5.0
	M11		L70*6	1			4574	S235-JR	29.0	29	1.2
M12			Lam. 8	2					2.2	4	0.2
	M12	Lam. 8		1	175	8	205	AIS304	2.2	2	0.1
M13			Lam. 8	20					0.4	8	0.3
	M13	Lam. 8		1	60	8	110	AIS304	0.4	0	0.0
M14			L70*6	4					29.0	116	5.0
	M14	L70*6		1			4575	S235-JR	29.0	29	1.2
M15			Lam. 8	2					2.2	4	0.2

data 06/ 11/2017

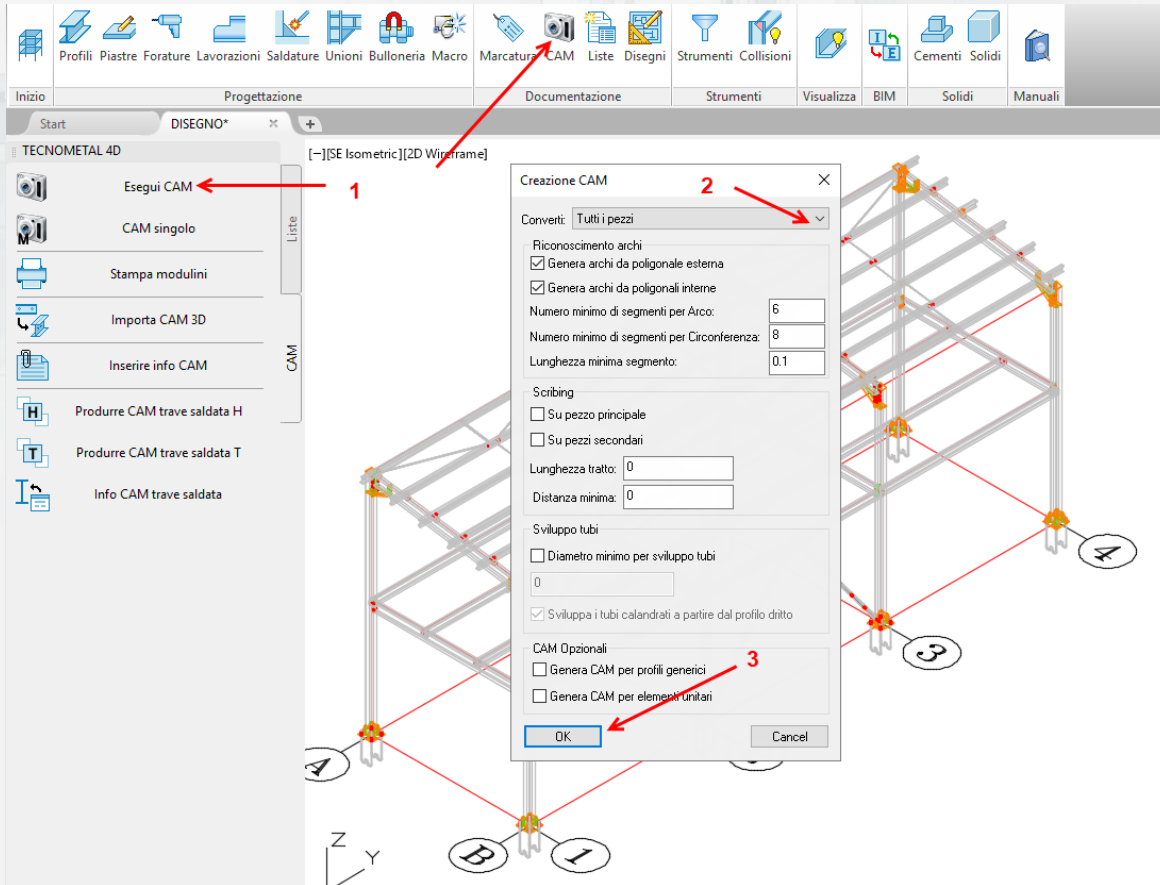
foglio 001/002



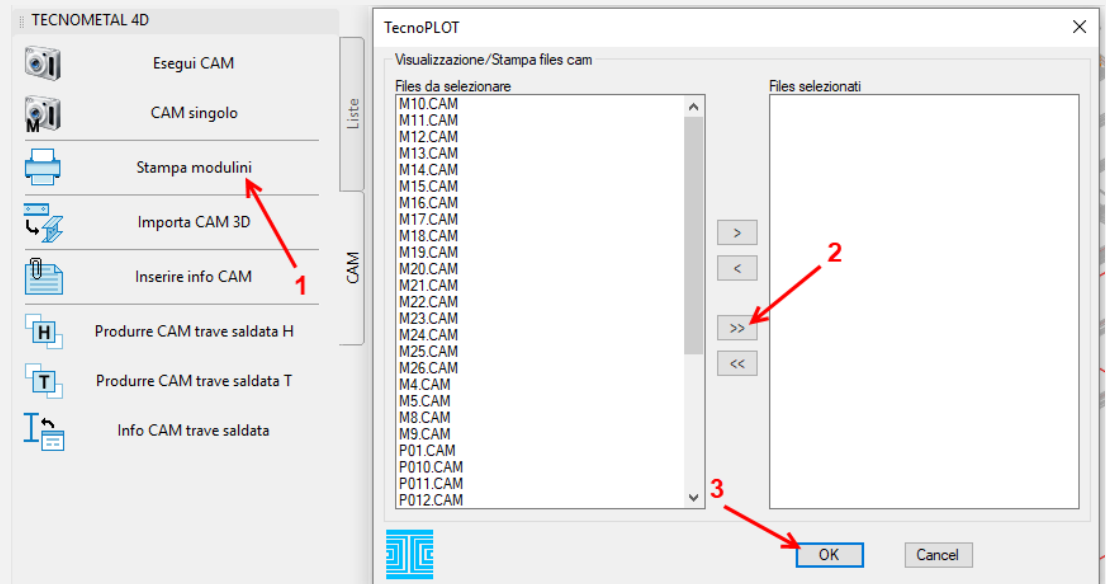
WORKSHOP SKETCHES CREATION

The creation of sketches and CAM file is possible **ONLY** after you have run the marking of the structure.

Select **Execute CAM** (1), select **All pieces** (2) and press **OK** (3).



To visualize the generated Sketches, use the command **Print Sketches** (1), press the button (2) in order to select all CAM files and press OK (3) to confirm.





M17.CAM - TecnoPLOT

File Visualizza Utilità ?

Dxf ncl [Navigation icons]

FIRMA _____
REV: 1 Data _____ 2 Data _____ 3 Data _____

À norma di legge il presente documento non può essere riprodotto o comunicato a terzi senza la nostra autorizzazione scritta

17 (0) (0) [3]
13 (0) (0) [2]

DATA	FIRMA	MARCA	POSIZ.	PROFILO	LUNGH.	LARGH.	steel&graphics srl	N° COMESSA	
		M17	M17	IFE180	6495.00	0.00		TUTORIAL	
MATERIALE: S235-JR				Q.TA: 8	PESO UN.: 122.1		CLIENTE:	EMESSO IL 06/11/2017	
NOTE:				Q.tà posizione per marca:		COMESSA:		FIRMA	FOGLIO
						DISEGNO: DISEGNO			8/39

Pronto

NUM

Use the upper arrows to scroll the pieces.