



Tutorial TecnoMETAL

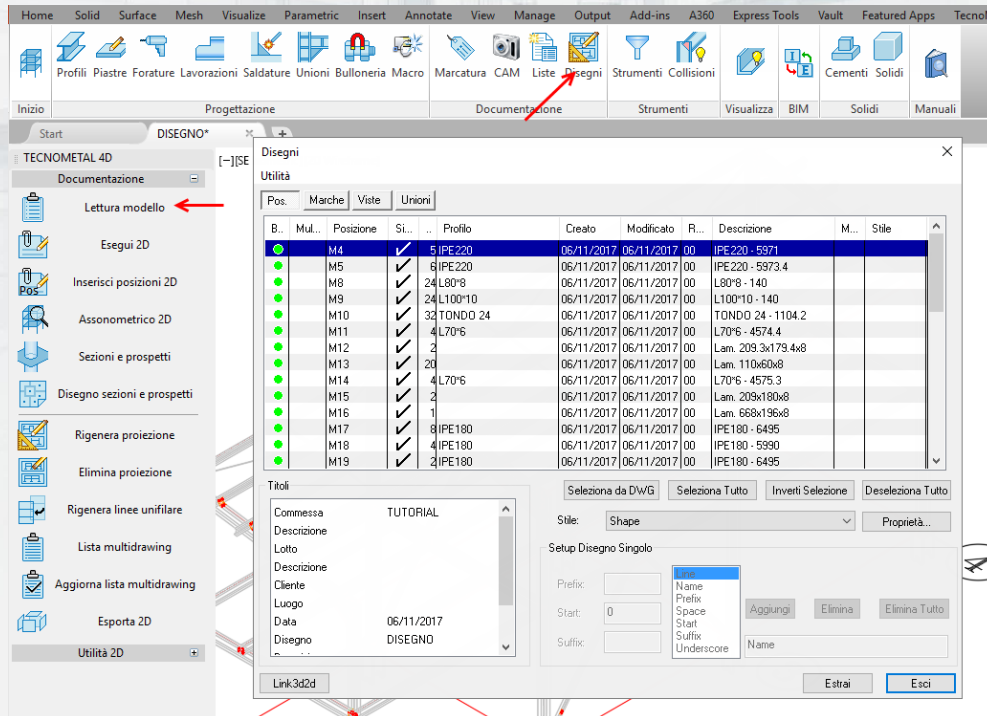


Lesson 3
2D drawings
obtained
automatically with
TecnoMETAL
from 3D model

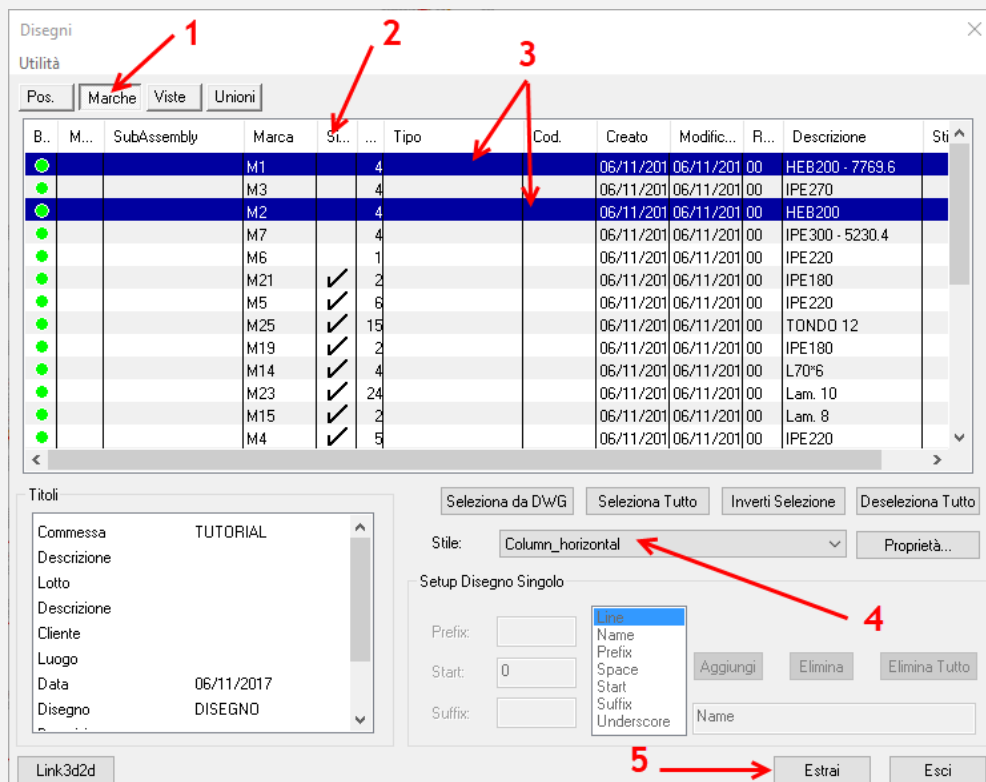


BIDIMENSIONAL DRAWINGS EXTRACTION

From the Drawing command press the button **"Model reading"** to read the model and generate the files you need to create 2D drawings.



Click on the tab **"Mark"** (1) and then the column **"Single"** (2) to divide the single marks from composed ones (in this example will be used only composed marks and views), select the lines (3) and the style **Column_horizontal** (4) and press **Estrai** (5).





Select the beams (1) and the style **Beam** (2) and press **Estrai** (3).

Disegni

Utilità

Pos. Marche Viste Unioni

B...	M...	SubAssembly	Marca	Si...	...	Tipo	Cod.	Creato	Modific...	R...	Descrizione	Sti
●			M1		4			06/11/201	06/11/201	00	HEB200 - 7769.6	Col
●			M3		4			06/11/201	06/11/201	00	IPE270	
●			M2		4			06/11/201	06/11/201	00	HEB200	Col
●			M7		4			06/11/201	06/11/201	00	IPE 300 - 5230.4	
●			M6		1			06/11/201	06/11/201	00	IPE220	
●			M21	✓	2			06/11/201	06/11/201	00	IPE180	
●			M5	✓	6			06/11/201	06/11/201	00	IPE220	
●			M25	✓	15			06/11/201	06/11/201	00	TONDO 12	
●			M19	✓	2			06/11/201	06/11/201	00	IPE180	
●			M14	✓	4			06/11/201	06/11/201	00	L70*6	
●			M23	✓	24			06/11/201	06/11/201	00	Lam. 10	
●			M15	✓	2			06/11/201	06/11/201	00	Lam. 8	
●			M4	✓	5			06/11/201	06/11/201	00	IPE220	

Titoli

Commissa TUTORIAL

Descrizione

Lotto

Descrizione

Cliente

Luogo

Data 06/11/2017

Disegno DISEGNO

Link3d2d

Seleziona da DWG Seleziona Tutto Inverti Selezione Deseleziona Tutto

Stile: Beam

Setup Disegno Singolo

Prefix:

Start: 0

Suffix:

Line
Name
Prefix
Space
Start
Suffix
Underscore

Aggiungi Elimina Elimina Tutto

Name

3 → Estrai Esci

Click on the tab **Views** (1), the style **View** (2), press **Estrai** (3) and exit when the operation is completed.

Disegni

Utilità

Pos. Marche Viste Unioni

Blo...	Multidr...	Vista	Creato	Modificato	Revi...	Descrizione	Stile
●		R_V1	06/11/2017	06/11/2017	00		
●		R_V2	06/11/2017	06/11/2017	00		
●		R_V3	06/11/2017	06/11/2017	00		
●		R_V4	06/11/2017	06/11/2017	00		
●		R_V5_1	06/11/2017	06/11/2017	00		
●		R_V5_2	06/11/2017	06/11/2017	00		

Titoli

Commissa TUTORIAL

Descrizione

Lotto

Descrizione

Cliente

Luogo

Data 06/11/2017

Disegno DISEGNO

Link3d2d

Seleziona da DWG Seleziona Tutto Inverti Selezione Deseleziona Tutto

Stile: View

Setup Disegno Singolo

Prefix:

Start: 0

Suffix:

Line
Name
Prefix
Space
Start
Suffix
Underscore

Aggiungi Elimina Elimina Tutto

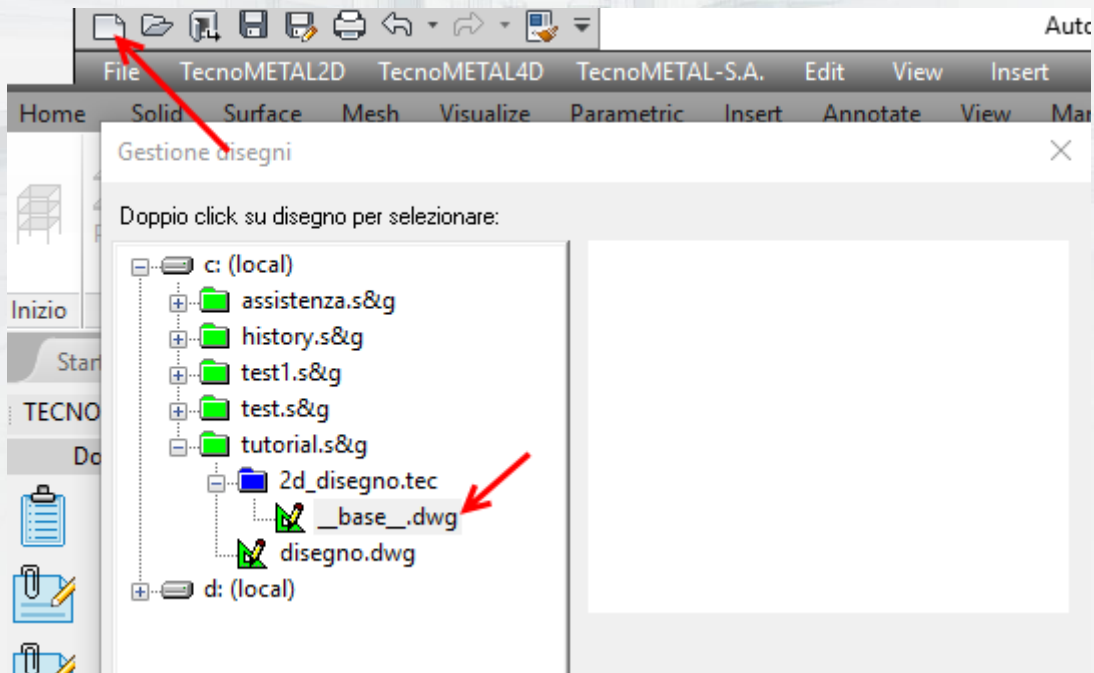
Name

3 → Estrai Esci

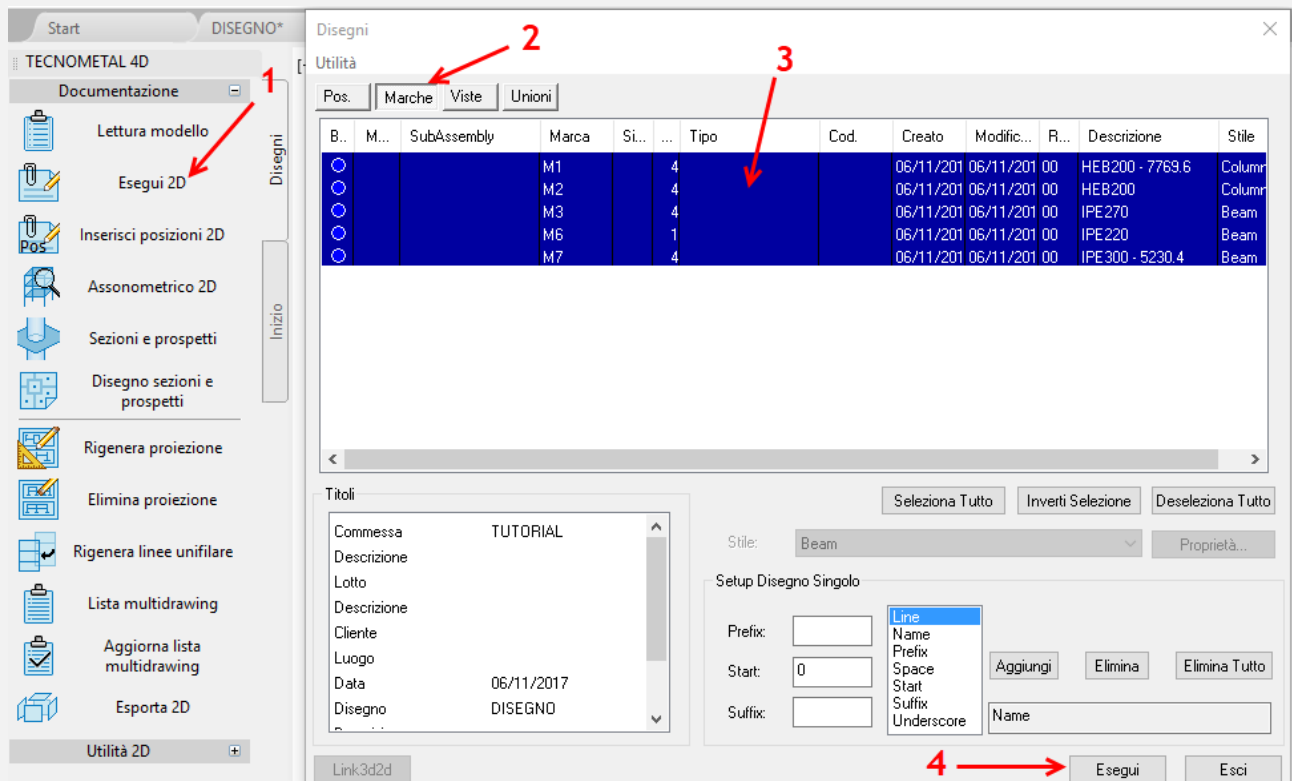


Note: the applied extraction **styles** are those present by default in the program, it is possible to implement or to modify them.

Clicking on the **New drawing**, **Drawing management** screen is displayed, in the folder **2d_drawing.tec** open with a double click the drawing **__base__.dwg**.



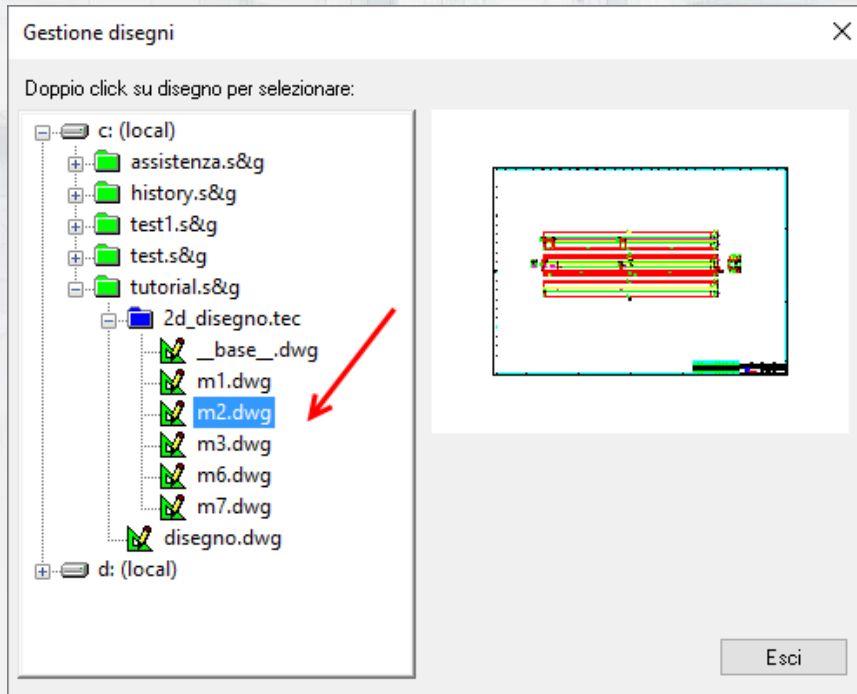
Click on the **Generate 2D (1)**. The "Drawings" screen will be opened, select the tab **"Mark"** (2), select the marks to be drawn (3), and press the button **"Execute"**.





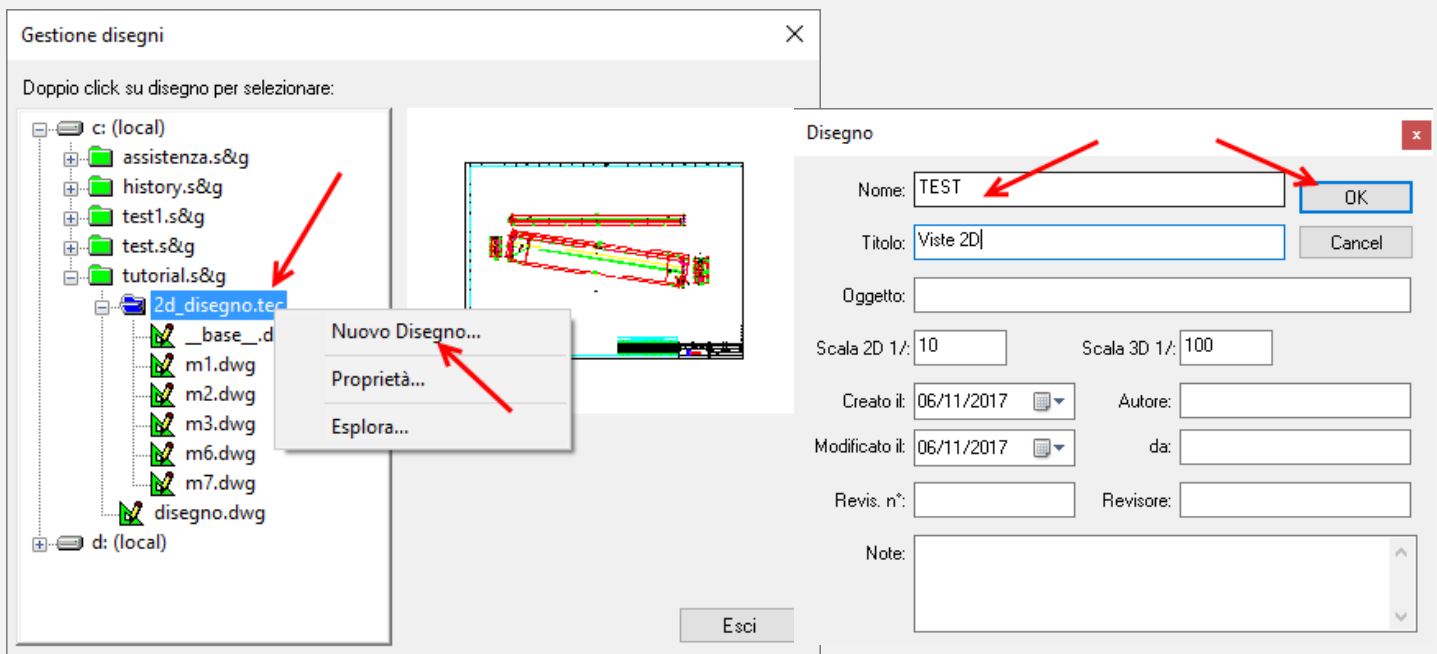
Clicking again on the button “**New Drawing**”, “**Drawings management**” screen is opened with the list of “**Single Drawings**” that are generated .

With a double click, you can visualize the generated drawing.



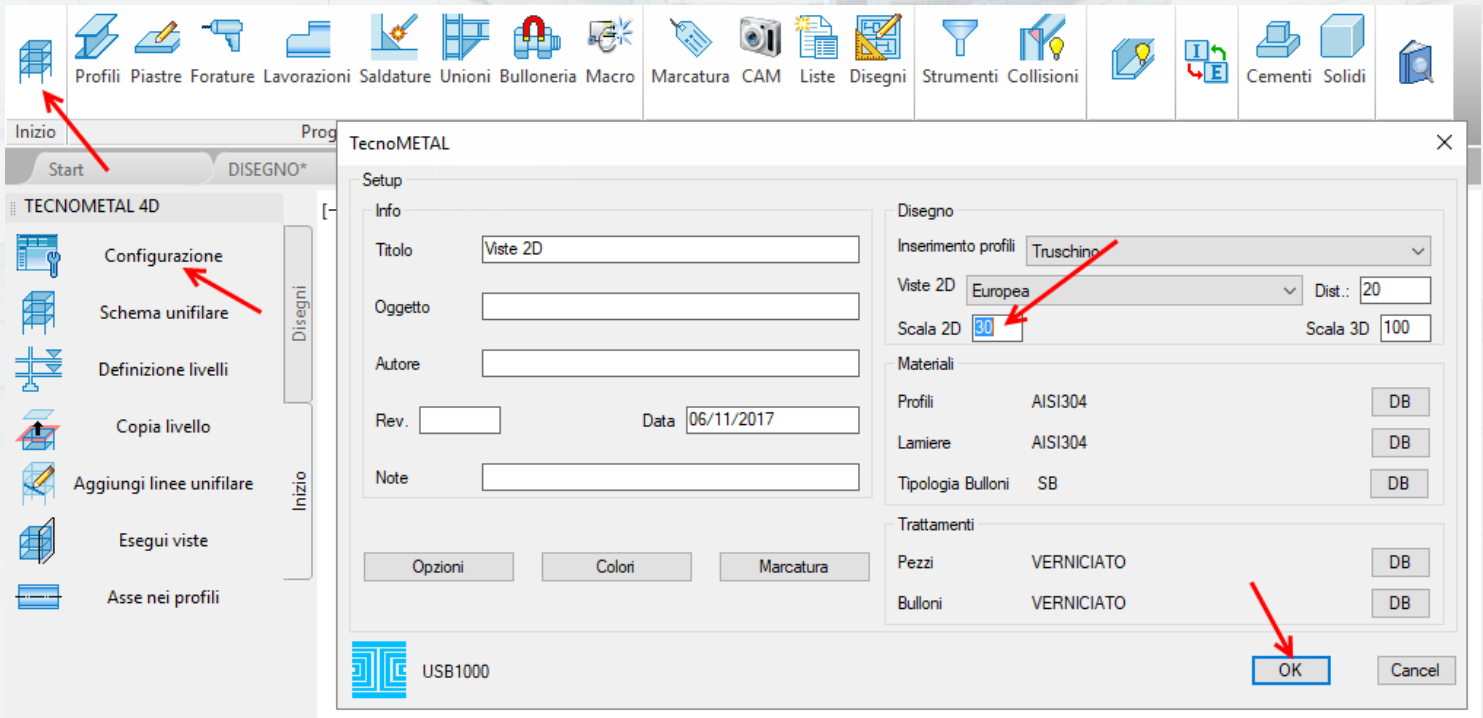
Clicking again on the button “**New Drawing**”, “**Drawings management**” screen is opened, select the folder “2d_drawing.tec” and press the right mouse button to create a new drawing (in this way you create a “**Multi drawing**”).

Will be opened the screen to enter the name of the drawing, then press OK

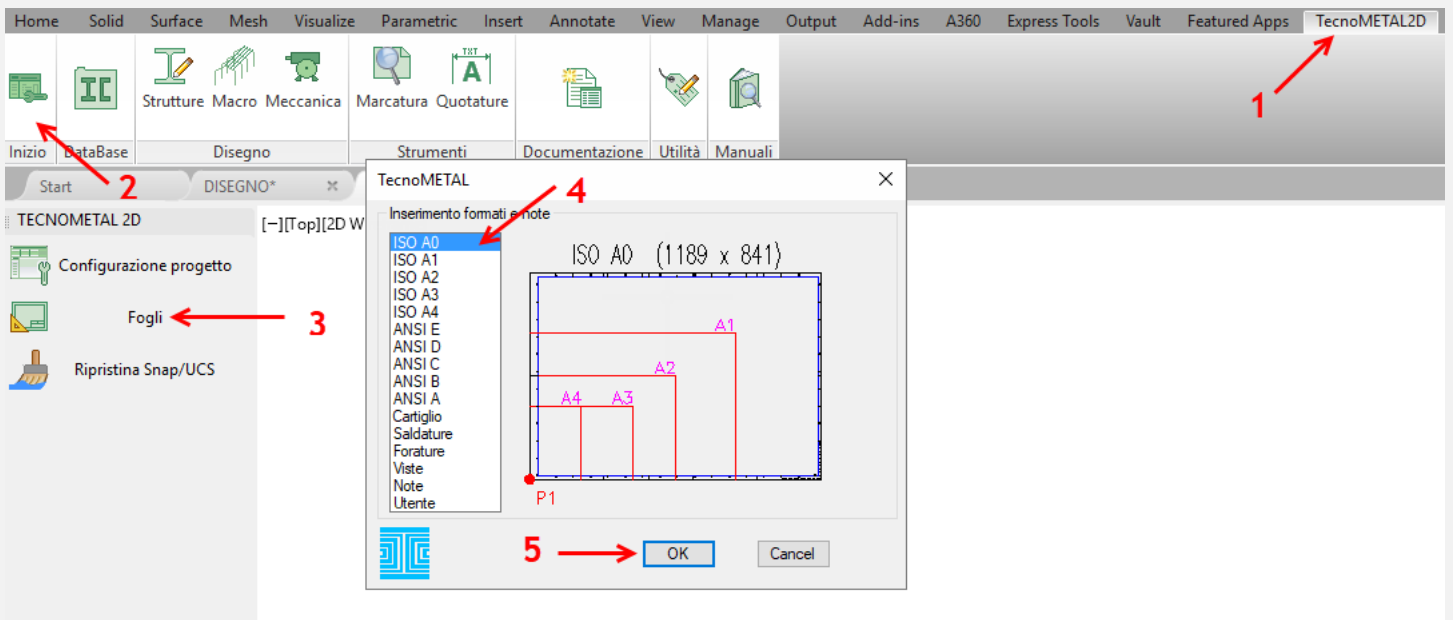




A new blank drawing is created, in the setup we enter the **scale 2D 30**.



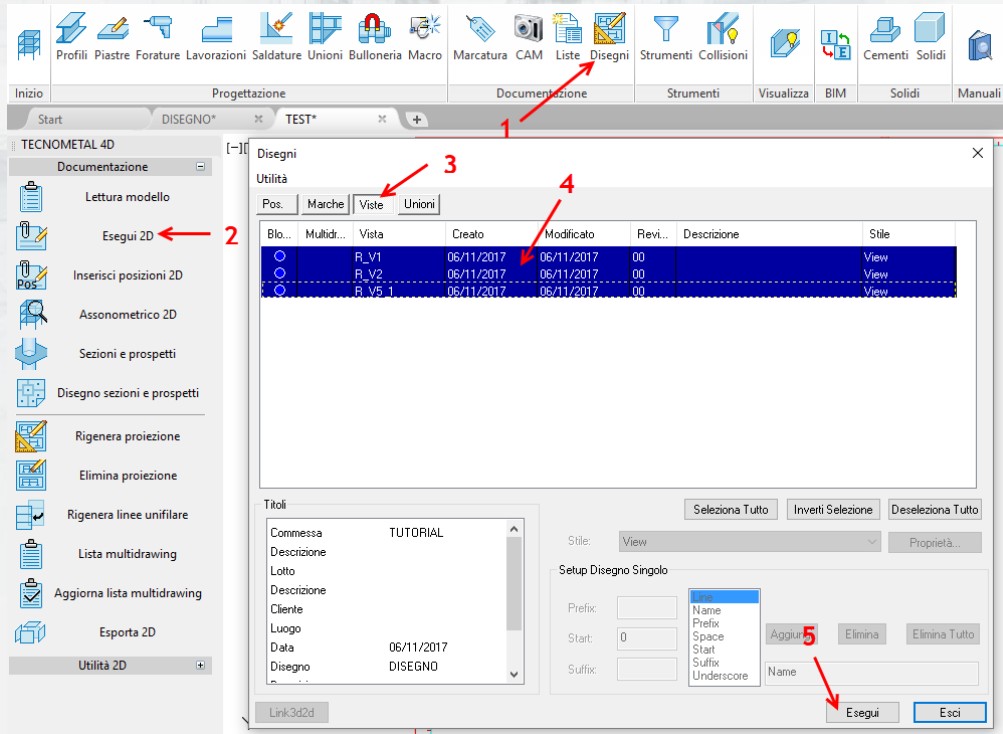
From TecnoMETAL 2D (1) menu we select Start (2) Sheet command (3) select ISO A0 (4) press OK (5) and then ENTER.



This way in the drawing is inserted the format in scale 1:30, execute ZOOM ALL.



Select the **Drawing** command(1) and **Execute 2D** (2) select the tab **Views** (3) select the views to be inserted (4) and press Execute (5).



Insert the views in the drawing:

